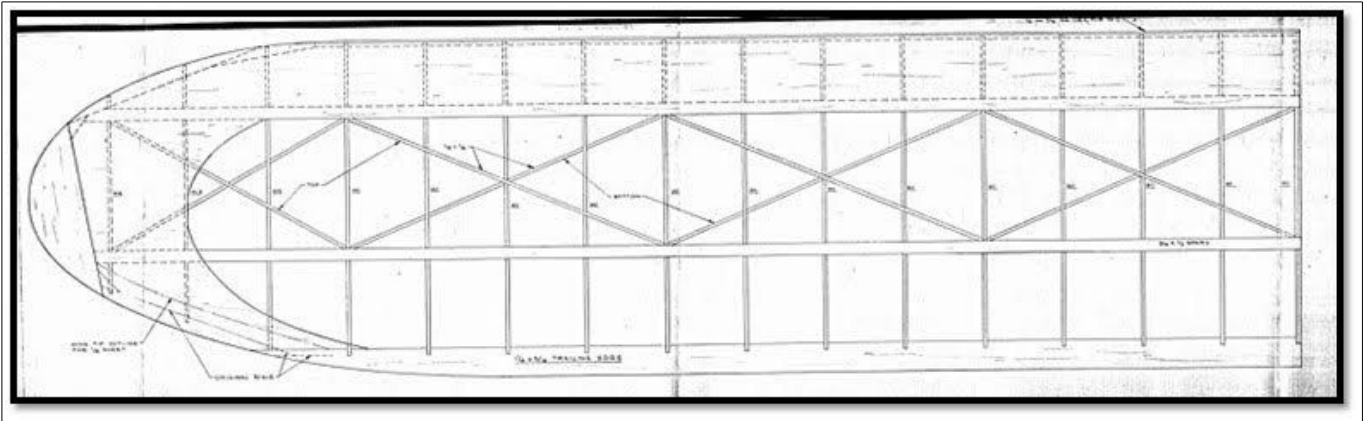


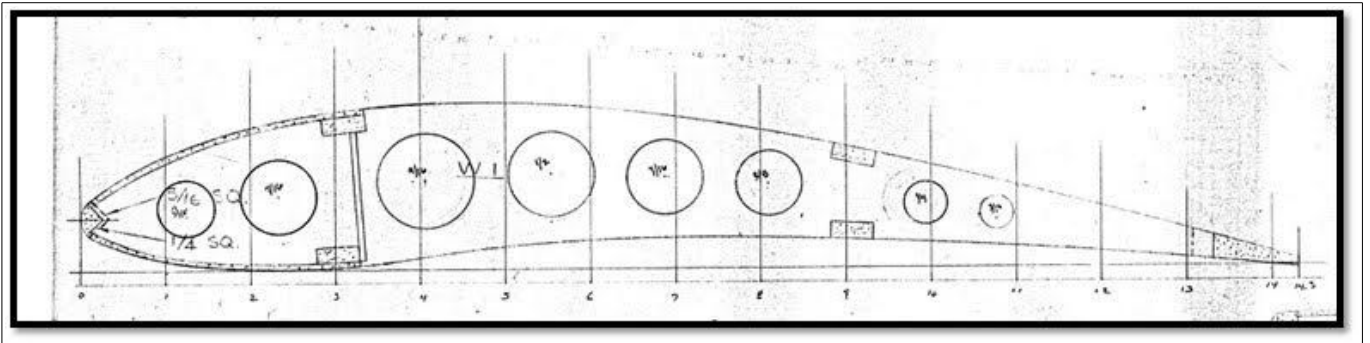
## TW Shershaw Cumulus Story November 2017

Trevor,

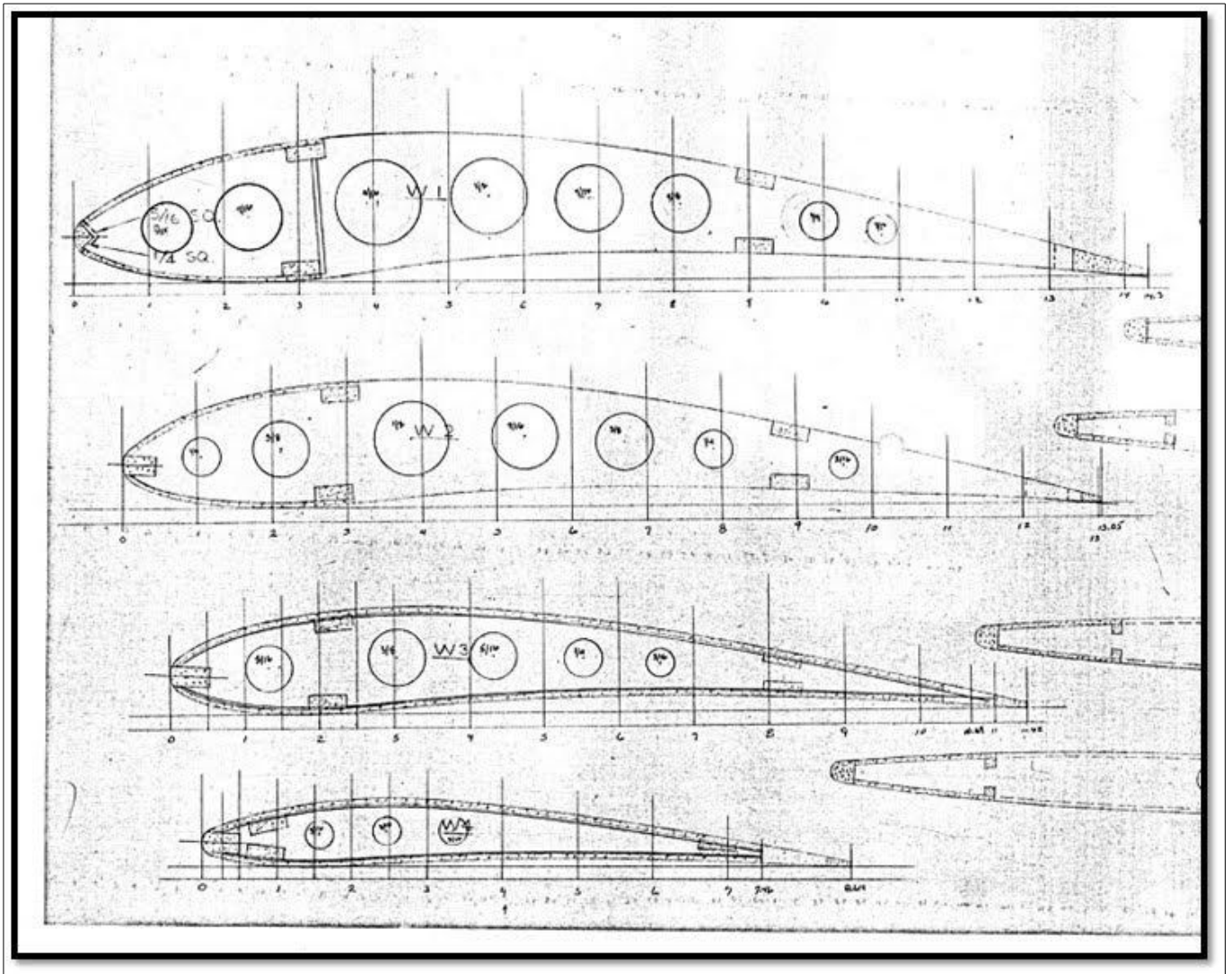
To depart from my Lancer project, I thought you might enjoy a little nostalgia story. I want to share a nine (9) foot wing scratch built construction I did back in 1986. The wing shown below was to a Shershaw Cumulus scaled up 110%.



I drew up all the wing rib patterns by hand, which I still have by the way. They were cut out of 1/8" balsa and each one had a series of lightening holes as the W1 rib below shows.



This shows the W1 and the W2 and W3 tip rib patterns I used. As you can imagine, it took me well over a month to make these 32 ribs as I was still working full time at LTV Aerospace.



This is the only picture I have of that Cumulus that shows all of the ribs with all of the holes. Planking that long leading edge top and bottom with 1/16" sheet balsa was quite an effort as I recall.

I became so involved in my work that I had to give up modeling at that time. So I sold this Cumulus to my friend Dick Huang who finished it as shown here.

Then sometime in the mid 1990's I built a second wing for another 9 foot Cumulus. However, again my work was to take me away from model building. So I wrapped the uncovered wing with thin plastic bags I got from the cleaners and stored it up near the ceiling in one of our bedrooms for safe keeping.





I modified the planking on the wing tips and added diagonals between the rear spars and the trailing edge as the picture below shows. For some reason that I don't remember, I never completed this Cumulus either and sold the completed wing to some guy who lived up in Kansas.....Tandy

