



Trevor Boundy <trevor@boundy39.com>

6 Veco Pursuit - Full Size Stab Geometry Development

1 message

Tandy Walker <rdb435021@icloud.com>
 To: Tandy Walker <rdb435021@icloud.com>

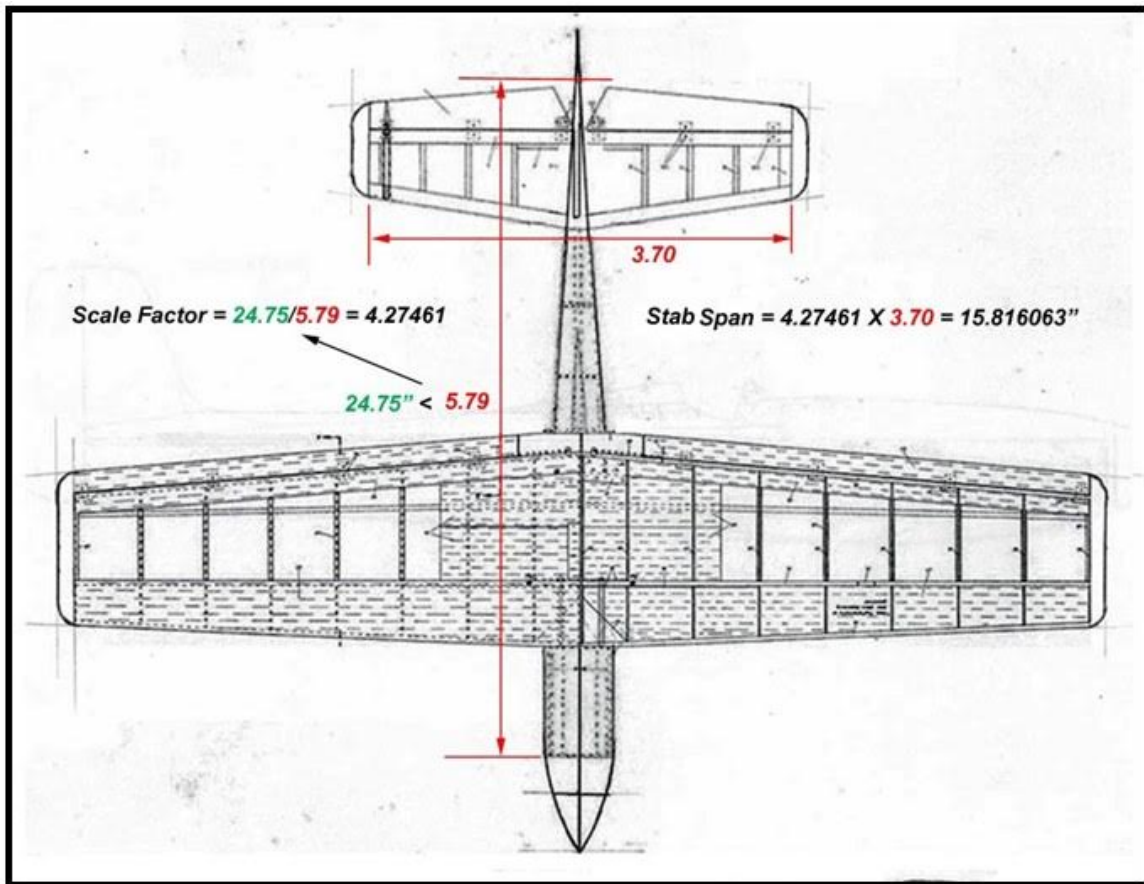
3 August 2021 at 05:34

Report No. 6

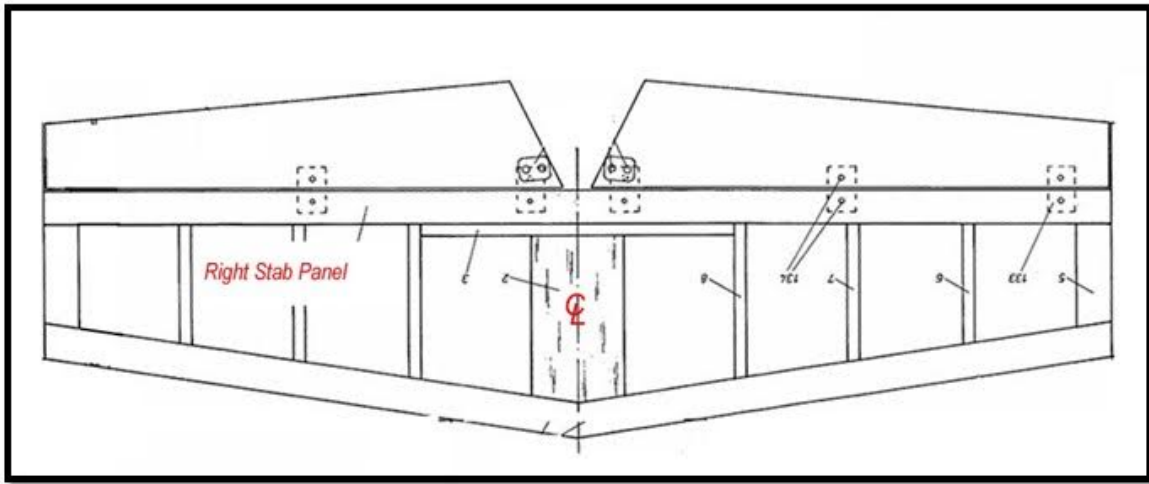
Veco Pursuit

August 2, 2021

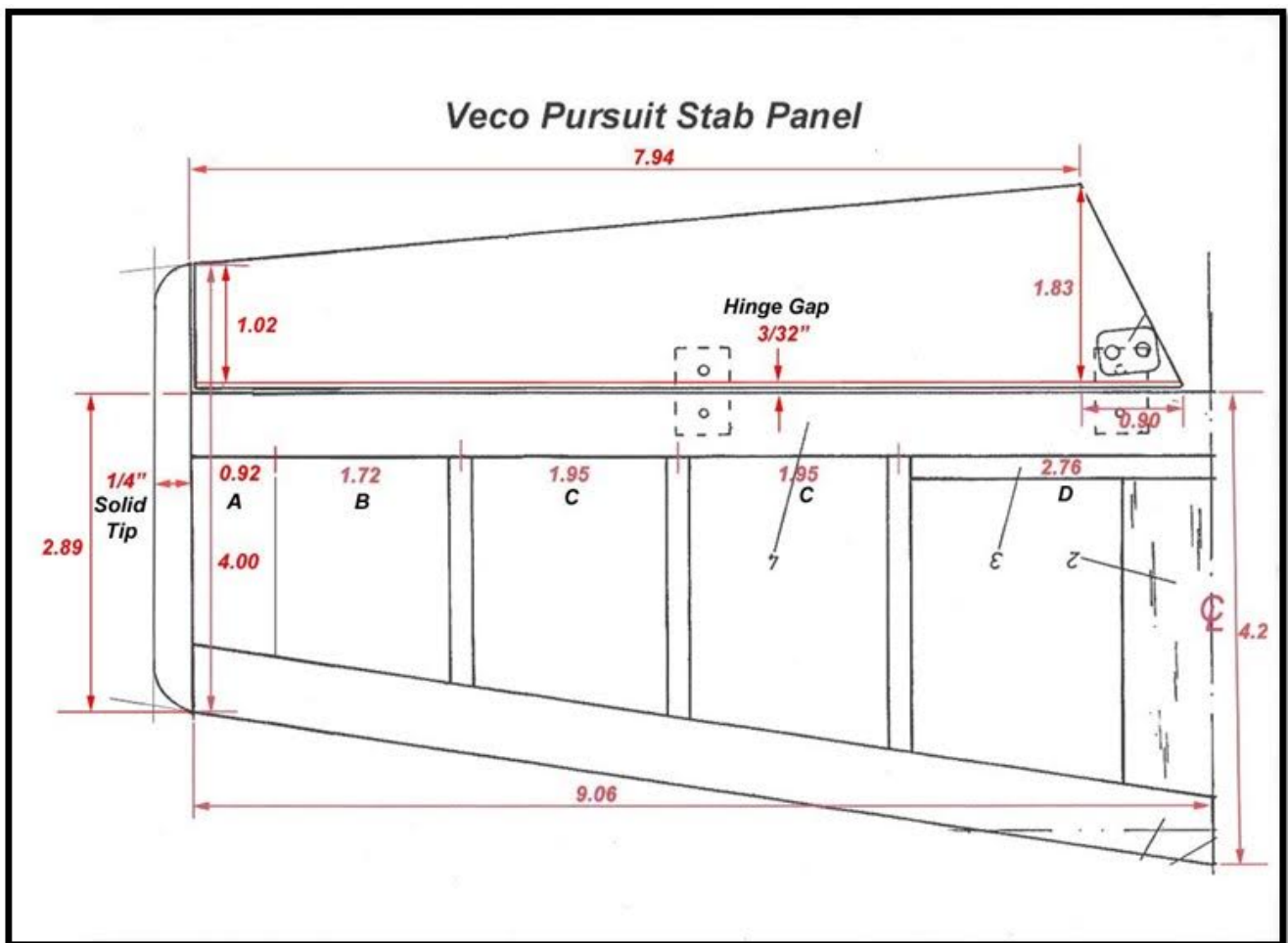
The planform for the Veco Pursuit shown below was developed in Report No. 1 by adjusting and superimposing the wing and stab from the Zlin-50 plans onto the 2.5" wide fuselage. The tips of the wing and stab were also modified. The full



The right stab panel shown below was enlarged and printed out on a 8-1/2" X 11" letter size page for measurements.



The measurements for the enlarged sketch of the left wing panel are shown below.



MEASURED DIMENSIONS FROM THE FIGURE ABOVE

The semi-span $bs/2 = 15.81606"/2 = 7.90803$

The scale factor for the figure above is $SF = 7.90803/9.06 = 0.87285$

$Csr = 4.2 \times 0.87285 = 3.66597" \sim 3.67" \sim$ Stab Root Chord

$Cst = 2.89 \times 0.87285 = 2.52254" \sim 2.52" \sim$ Stab Tip Chord

$bs/2 = 7.90803" \sim 7.91" \sim$ Panel Span

$C_{er} = 1.83 \times 0.87285 = 1.59732'' \sim 1.60'' \sim$ Elevator Root Chord

$C_{st} = 1.02 \times 0.87285 = 0.88442'' \sim 0.88'' \sim$ Elevator Tip Chord

$be/2 = (7.94+0.90) \times 0.87285 = 6.93+0.79 = 7.72'' \sim$ Panel Span

$A = 0.92 \times 0.87285 = 0.80''$

$B = 1.72 \times 0.87285 = 1.50''$

$C = 1.95 \times 0.87285 = 1.70''$

$D = 2.76 \times 0.87285 = 2.41''$

These full size calculated dimensions were used to develop the full size drawing of the horizontal tail panel on an 8-1/2 X 11 letter size sheet as shown below. The gap for the hinge line was set at 3/32" to accommodate the Klett nylon hinges.....Tandy

